

SWA PAS normal mode config
File: IA-FCP-068_in.xls
Author: n/a



Procedure Summary

Objectives

PAS NM config

Summary of Constraints

n/a

Spacecraft Configuration

Start of Procedure

Type Pre-condition Here

End of Procedure

Type Post-condition Here

Reference File(s)

Input Command Sequences

Output Command Sequences

AIAF068A

Referenced Displays

ANDs GRDs SLDs

Configuration Control Information

DATE	FOP ISSUE	VERSION	MODIFICATION DESCRIPTION	AUTHOR	SPR REF
------	-----------	---------	--------------------------	--------	---------

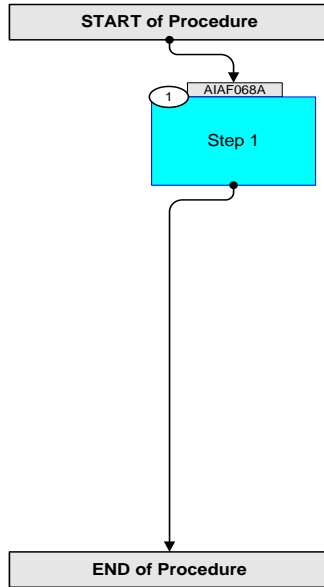
SWA PAS normal mode config
File: IA-FCP-068_in.xls
Author: n/a



solar orbiter



Procedure Flowchart Overview



SWA PAS normal mode config File: IA-FCP-068_in.xls Author: n/a	 
--	--

Step	Label/Time	Activity/Remarks/Branch	CK	Display
Beginning of Procedure				
Beginning of Sequence				
AIAF068A		SWA PAS NM Config SeqFlags [Crit/Plan/Stdalone/Sched] : NNYN Forced Subschedule : SWA (109) TimeTag type : B <u>Formal Parameter List</u> {FP} XF068A01 DefVal = 0 (PAR_DESC) <hex> {FP} XF068A02 DefVal = 14 (PAR_DESC) <hex> {FP} XF068A03 DefVal = 40 (PAR_DESC) <hex> {FP} XF068A04 DefVal = 1 (PAR_DESC) <hex> {FP} XF068A05 DefVal = 7 (PAR_DESC) <hex> {FP} XF068A06 DefVal = 1 (PAR_DESC) <hex>		
1		Step 1		
		Modify Configuration Parameter 0x3005		
	+00.00.00	Send SWA_TC_DPU_MODIFY_CONF_PARS ZIA58706 SWA_TC_DPU_MODIFY_CONF_PARS TC Control Flags: GBM IL DSE --Y NC --- Command Parameters : PIA60133 NUM_OF_PARS = 0001 <dec> (Def) PIA60136 PAR_ID = 3005 <hex> PIA60135 PAR_DESC_SIZE = 42 <dec> PIA60134 PAR_DESC = 0 <hex> PIA60134 PAR_DESC = 0 <hex> PIA60134 PAR_DESC = 0 <hex> PIA60134 PAR_DESC = 0 <hex> PIA60134 PAR_DESC = 0 <hex> PIA60134 PAR_DESC = 0 <hex> PIA60134 PAR_DESC = 4 <hex>		
		PIA60134 PAR_DESC = 0 <hex> PIA60134 PAR_DESC = 0 <hex> PIA60134 PAR_DESC = 5C <hex> PIA60134 PAR_DESC = 0 <hex> PIA60134 PAR_DESC = 0 <hex> PIA60134 PAR_DESC = 0 <hex> PIA60134 PAR_DESC = 0 <hex> PIA60134 PAR_DESC = 0 <hex> PIA60134 PAR_DESC = 9 <hex> PIA60134 PAR_DESC = 0 <hex> PIA60134 PAR_DESC = 0 <hex> PIA60134 PAR_DESC = 1 <hex> PIA60134 PAR_DESC = 0 <hex> PIA60134 PAR_DESC = 0 <hex> PIA60134 PAR_DESC = 1 <hex>		

SWA PAS normal mode config
 File: IA-FCP-068_in.xls
 Author: n/a




Step	Label/Time	Activity/Remarks/Branch	CK	Display
		PIA60134 PAR_DESC = 0 <hex> PIA60134 PAR_DESC = 0 <hex> PIA60134 PAR_DESC = XF068A01 PIA60134 PAR_DESC = 0 <hex> PIA60134 PAR_DESC = 0 <hex> PIA60134 PAR_DESC = XF068A02 PIA60134 PAR_DESC = 0 <hex> PIA60134 PAR_DESC = 0 <hex> PIA60134 PAR_DESC = XF068A03 PIA60134 PAR_DESC = 0 <hex> PIA60134 PAR_DESC = 0 <hex> PIA60134 PAR_DESC = XF068A04 PIA60134 PAR_DESC = 0 <hex> PIA60134 PAR_DESC = 0 <hex> PIA60134 PAR_DESC = XF068A05		
		PIA60134 PAR_DESC = 0 <hex> PIA60134 PAR_DESC = 0 <hex> PIA60134 PAR_DESC = XF068A06 PIA60134 PAR_DESC = 0 <hex> PIA60134 PAR_DESC = 0 <hex> PIA60134 PAR_DESC = 1 <hex>		
		Accept Configuration Parameter change		
	+00.00.02	Send SWA_TC_DPU_ACCEPT_CONF_PARS ZIA58708 SWA_TC_DPU_ACCEPT_CONF_PARS TC Control Flags: GBM IL DSE --Y NC ---		
		Report Configuration Parameter change		
	+00.00.01	Send SWA_TC_DPU_REPORT_CONF_PARS ZIA58707 SWA_TC_DPU_REPORT_CONF_PARS TC Control Flags: GBM IL DSE --Y NC --- Command Parameters : PIA60137 NUM_OF_PARAMS = 0001 <dec> (Def) PIA60138 PAR_ID = 3005 <hex>		
		End of Sequence		
AIAF068A				
End of Procedure				