

SWA HIS Safe HVs  
File: IA-FCP-075.xls  
Author: daniel lakey



solar orbiter



### Procedure Summary

#### Objectives

HIS Safe HVs

#### Summary of Constraints

n/a

#### Spacecraft Configuration

##### Start of Procedure

Type Pre-condition Here

##### End of Procedure

Type Post-condition Here

#### Reference File(s)

##### Input Command Sequences

##### Output Command Sequences

AIAF075A  
AIAF075B

#### Referenced Displays

ANDs      GRDs      SLDs

#### Configuration Control Information

DATE	FOP ISSUE	VERSION	MODIFICATION DESCRIPTION	AUTHOR	SPR REF
25/03/2020		1	Renamed	dlakey	M7
08/05/2020		2	SOL_FCR-310 - SWA Procedure Overhaul	dlakey	M7

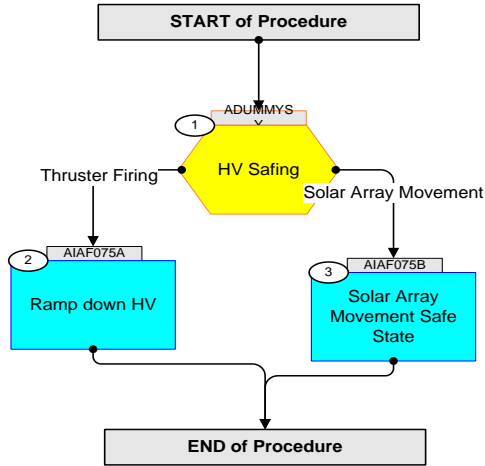
SWA HIS Safe HVs  
File: IA-FCP-075.xls  
Author: daniel lakey



solar orbiter



## Procedure Flowchart Overview



SWA HIS Safe HVs  
File: IA-FCP-075.xls  
Author: daniel lakey



solar orbiter



Step	Label/Time	Activity/Remarks/Branch	CK	Display
<b>Beginning of Procedure</b>				
Beginning of Sequence				
	<b>ADUMMYSY</b>	<b>SWA HIS Safe HVs</b>  TimeTag type : B		
1		<b>HV Safing</b>  <b>Next step(s):</b> -> 2 Thruster Firing -> 3 Solar Array Movement		
		For either Thruster Firing or Solar Array Movements, the HIS HV levels must be put in a safe state.		
End of Sequence				
Beginning of Sequence				
	<b>AIAF075A</b>	<b>SWA HIS Safe HVs</b> SeqFlags [ Crit/Plan/Stdalone/Sched ] : NSYN Forced Subschedule : SWA (109) TimeTag type : B		
2		<b>Ramp down HV</b>  <b>Next step(s):</b> -> END		
		Command slow 1-hour safe ramp down of HIS HVs		
	+00.00.00	<b>Send SWA_TC_HIS_SAFE_NOMINAL</b> <b>ZIA58941 SWA_TC_HIS_SAFE_NOMINAL</b> TC Control Flags: GBM IL DSE --Y NC ---		
End of Sequence				
Beginning of Sequence				
	<b>AIAF075B</b>	<b>SWA HIS SafeHv4SaMov</b> SeqFlags [ Crit/Plan/Stdalone/Sched ] : NSYN Forced Subschedule : SWA (109) TimeTag type : B		
3		<b>Solar Array Movement Safe State</b>  <b>Next step(s):</b> -> END		

SWA HIS Safe HVs File: IA-FCP-075.xls Author: daniel lakey	 
--	--

Step	Label/Time	Activity/Remarks/Branch	CK	Display
		Send HIS macro command		
	+00.00.00	Send SWA_TC_HIS_MACRO_START ZIA58913 SWA_TC_HIS_MACRO_START TC Control Flags: GBM IL DSE --Y NC --- Command Parameters : PIA60001 MACRO = 7 <dec>		
<b>AIAF075B</b>		End of Sequence		
<b>End of Procedure</b>				