

SWA HIS enable data compression
File: IA-FCP-091.xls
Author: n/a



Procedure Summary

Objectives

Enable compression

Summary of Constraints

n/a

Spacecraft Configuration

Start of Procedure

Type Pre-condition Here

End of Procedure

Type Post-condition Here

Reference File(s)

Input Command Sequences

Output Command Sequences

AIAF091A

Referenced Displays

ANDs GRDs SLDs

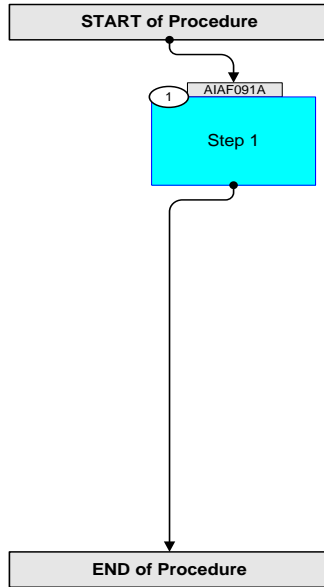
Configuration Control Information

DATE	FOP ISSUE	VERSION	MODIFICATION DESCRIPTION	AUTHOR	SPR REF
------	-----------	---------	--------------------------	--------	---------

SWA HIS enable data compression
File: IA-FCP-091.xls
Author: n/a



Procedure Flowchart Overview



SWA HIS enable data compression File: IA-FCP-091.xls Author: n/a	 
--	--

Step	Label/Time	Activity/Remarks/Branch	CK	Display
Beginning of Procedure				
Beginning of Sequence				
AIAF091A		SWA HIS EnabDataComp SeqFlags [Crit/Plan/Stdalone/Sched] : NSYN Forced Subschedule : SWA (109) TimeTag type : B		
1		Step 1		
		Enable HIS data compression		
	+00.00.00	Send SWA_TC_HIS_PARAM_SET ZIA58919 SWA_TC_HIS_PARAM_SET TC Control Flags: GBM IL DSE --Y NC --- Command Parameters : PIA60356 PARAMETER = COMP_EN_MATRIX <hex> PIA60352 VALUE = 1 <dec>		
	+00.00.01	Send SWA_TC_HIS_PARAM_SET ZIA58919 SWA_TC_HIS_PARAM_SET TC Control Flags: GBM IL DSE --Y NC --- Command Parameters : PIA60356 PARAMETER = COMP_EN_VDF <hex> PIA60352 VALUE = 1 <dec>		
	+00.00.01	Send SWA_TC_HIS_PARAM_SET ZIA58919 SWA_TC_HIS_PARAM_SET TC Control Flags: GBM IL DSE --Y NC --- Command Parameters : PIA60356 PARAMETER = COMP_EN_SENS_PR <hex> PIA60352 VALUE = 1 <dec>		
	+00.00.01	Send SWA_TC_HIS_PARAM_SET ZIA58919 SWA_TC_HIS_PARAM_SET TC Control Flags: GBM IL DSE --Y NC --- Command Parameters : PIA60356 PARAMETER = COMP_EN_PHA <hex> PIA60352 VALUE = 1 <dec>		

SWA HIS enable data compression File: IA-FCP-091.xls Author: n/a	 
--	--

Step	Label/Time	Activity/Remarks/Branch	CK	Display
	AIAF091A	End of Sequence		
End of Procedure				