

SWA HIS disable data compression  
File: IA-FCP-092.xls  
Author: n/a



**Procedure Summary**

**Objectives**

Disable compression

**Summary of Constraints**

n/a

**Spacecraft Configuration**

**Start of Procedure**

Type Pre-condition Here

**End of Procedure**

Type Post-condition Here

**Reference File(s)**

**Input Command Sequences**

**Output Command Sequences**

AIAF092A

**Referenced Displays**

ANDs GRDs SLDs

**Configuration Control Information**

DATE	FOP ISSUE	VERSION	MODIFICATION DESCRIPTION	AUTHOR	SPR REF
------	-----------	---------	--------------------------	--------	---------

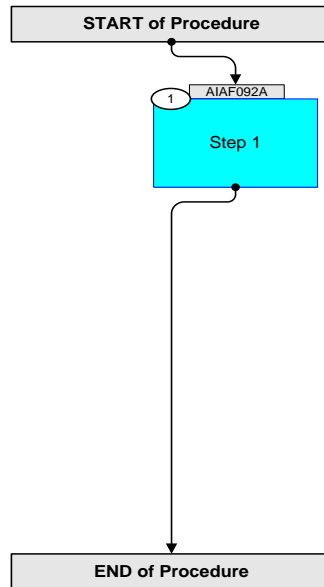
SWA HIS disable data compression  
File: IA-FCP-092.xls  
Author: n/a



solar orbiter



## Procedure Flowchart Overview



SWA HIS disable data compression File: IA-FCP-092.xls Author: n/a	 
---	--

Step	Label/Time	Activity/Remarks/Branch	CK	Display
<b>Beginning of Procedure</b>				
Beginning of Sequence				
<b>AIAF092A</b>		<b>SWA HIS DisDataComp</b> SeqFlags [ Crit/Plan/Stdalone/Sched ] : NSYN Forced Subschedule : SWA (109) TimeTag type : B		
1		<b>Step 1</b>		
		Disable HIS data compression		
	+00.00.00	Send SWA_TC_HIS_PARAM_SET ZIA58919 SWA_TC_HIS_PARAM_SET TC Control Flags: GBM IL DSE --Y NC --- Command Parameters : PIA60356 PARAMETER = COMP_EN_MATRIX <hex> PIA60352 VALUE = 0 <dec>		
	+00.00.01	Send SWA_TC_HIS_PARAM_SET ZIA58919 SWA_TC_HIS_PARAM_SET TC Control Flags: GBM IL DSE --Y NC --- Command Parameters : PIA60356 PARAMETER = COMP_EN_VDF <hex> PIA60352 VALUE = 0 <dec>		
	+00.00.01	Send SWA_TC_HIS_PARAM_SET ZIA58919 SWA_TC_HIS_PARAM_SET TC Control Flags: GBM IL DSE --Y NC --- Command Parameters : PIA60356 PARAMETER = COMP_EN_SENS_PR <hex> PIA60352 VALUE = 0 <dec>		
	+00.00.01	Send SWA_TC_HIS_PARAM_SET ZIA58919 SWA_TC_HIS_PARAM_SET TC Control Flags: GBM IL DSE --Y NC --- Command Parameters : PIA60356 PARAMETER = COMP_EN_PHA <hex> PIA60352 VALUE = 0 <dec>		

SWA HIS disable data compression File: IA-FCP-092.xls Author: n/a	 <b>solar orbiter</b>	 <b>esa</b>
---	---	--

Step	Label/Time	Activity/Remarks/Branch	CK	Display
	<b>AIAF092A</b>	End of Sequence		
<b>End of Procedure</b>				