

SWA EAS2 set hemisphere values
File: IA-FCP-122.xls
Author: n/a



Procedure Summary

Objectives

SWA set EAS2 hemisphere values

Summary of Constraints

n/a

Spacecraft Configuration

Start of Procedure

Type Pre-condition Here

End of Procedure

Type Post-condition Here

Reference File(s)

Input Command Sequences

Output Command Sequences

AIAF122A

Referenced Displays

ANDs GRDs SLDs

Configuration Control Information

DATE	FOP ISSUE	VERSION	MODIFICATION DESCRIPTION	AUTHOR	SPR REF
------	-----------	---------	--------------------------	--------	---------

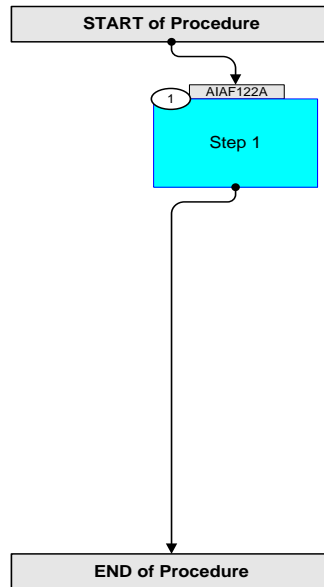
SWA EAS2 set hemisphere values
File: IA-FCP-122.xls
Author: n/a



solar orbiter



Procedure Flowchart Overview



SWA EAS2 set hemisphere values File: IA-FCP-122.xls Author: n/a	 
---	--

Step	Label/Time	Activity/Remarks/Branch	CK	Display
Beginning of Procedure				
Beginning of Sequence				
	AIAF122A	SWA EAS2 SetHemVal SeqFlags [Crit/Plan/Stdalone/Sched] : NSYN Forced Subschedule : SWA (109) TimeTag type : B <u>Formal Parameter List</u> {FP} XF122A01 DefVal = DE (VR_0) <hex> {FP} XF122A02 DefVal = B8 (VR_1) <hex> {FP} XF122A03 DefVal = 51 (VR_2) <hex> {FP} XF122A04 DefVal = 67 (HV_0) <hex> {FP} XF122A05 DefVal = 18 (HV_1) <hex> {FP} XF122A06 DefVal = A0 (HV_2) <hex>		
1		Step 1		
		Set EAS2 hemisphere ratio		
	+00.00.00	Send SWA_TC_EAS2_SET_HEM_VOLT_RATIO ZIA58814 SWA_TC_EAS2_SET_HEM_VOLT_RATIO TC Control Flags: GBM IL DSE --Y NC --- Command Parameters : PIA60469 VR_0 = XF122A01 PIA60470 VR_1 = XF122A02 PIA60471 VR_2 = XF122A03		
		Set EAS2 hemisphere voltage		
	+00.00.02	Send SWA_TC_EAS2_SET_HEM_HIGH_VOLT ZIA58815 SWA_TC_EAS2_SET_HEM_HIGH_VOLT TC Control Flags: GBM IL DSE --Y NC --- Command Parameters : PIA60441 HV_0 = XF122A04 PIA60442 HV_1 = XF122A05 PIA60443 HV_2 = XF122A06		
		Rebuild EAS2 hemisphere table		

SWA EAS2 set hemisphere values File: IA-FCP-122.xls Author: n/a	 
---	--

Step	Label/Time	Activity/Remarks/Branch	CK	Display
	+00.00.02	Send SWA_TC_EAS2_MAIL_WR ZIA58819 SWA_TC_EAS2_MAIL_WR TC Control Flags: GBM IL DSE --Y NC --- Command Parameters : PIA60031 MAILBOX_ID = MBOX3 PIA60446 MBV0 = 0 <hex> PIA60447 MBV1 = 0 <hex> PIA60448 MBV2 = 1 <hex>		
AIAF122A		End of Sequence		
End of Procedure				