

SWA EAS1 run Eng Mode 7  
File: IA-FCP-125.xls  
Author: n/a



**Procedure Summary**

**Objectives**

SWA run EAS1 Eng Mode 7

**Summary of Constraints**

n/a

**Spacecraft Configuration**

**Start of Procedure**

Type Pre-condition Here

**End of Procedure**

Type Post-condition Here

**Reference File(s)**

**Input Command Sequences**

**Output Command Sequences**

AIAF125A

**Referenced Displays**

ANDs GRDs SLDs

**Configuration Control Information**

DATE	FOP ISSUE	VERSION	MODIFICATION DESCRIPTION	AUTHOR	SPR REF
------	-----------	---------	--------------------------	--------	---------

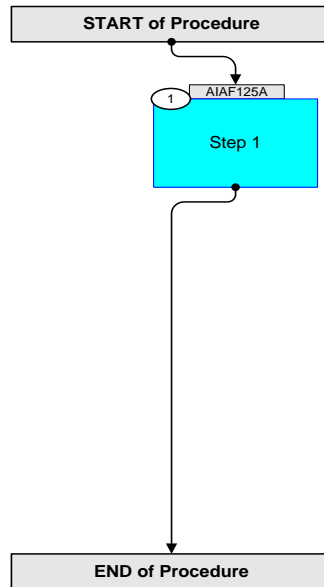
SWA EAS1 run Eng Mode 7  
File: IA-FCP-125.xls  
Author: n/a



solar orbiter



## Procedure Flowchart Overview



SWA EAS1 run Eng Mode 7 File: IA-FCP-125.xls Author: n/a	 
--	--

Step	Label/Time	Activity/Remarks/Branch	CK	Display
<b>Beginning of Procedure</b>				
Beginning of Sequence				
<b>AIAF125A</b>		<b>SWA EAS1 RunEngMode7</b> SeqFlags [ Crit/Plan/Stdalone/Sched ] : NSYN Forced Subschedule : SWA (109) TimeTag type : B		
1		<b>Step 1</b>		
		Run EAS1 Engineering Mode 7		
	+00.00.00	Send SWA_TC_EAS1_ENG7_MODE ZIA58793 SWA_TC_EAS1_ENG7_MODE TC Control Flags: GBM IL DSE --Y NC ---		
End of Sequence				
<b>AIAF125A</b>				
<b>End of Procedure</b>				