

SWA EAS2 run Eng Mode 7  
File: IA-FCP-126.xls  
Author: n/a



### Procedure Summary

#### Objectives

SWA run EAS2 Eng Mode 7

#### Summary of Constraints

n/a

#### Spacecraft Configuration

##### Start of Procedure

Type Pre-condition Here

##### End of Procedure

Type Post-condition Here

#### Reference File(s)

##### Input Command Sequences

##### Output Command Sequences

AIAF126A

#### Referenced Displays

ANDs GRDs SLDs

#### Configuration Control Information

DATE	FOP ISSUE	VERSION	MODIFICATION DESCRIPTION	AUTHOR	SPR REF
------	-----------	---------	--------------------------	--------	---------

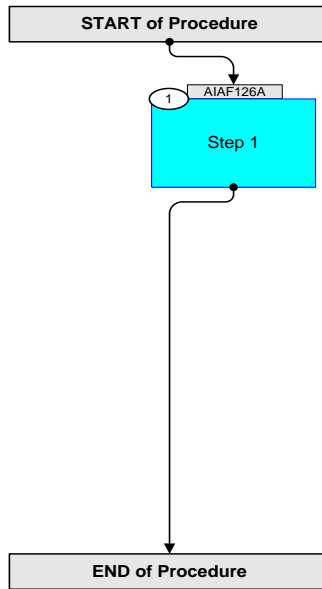
SWA EAS2 run Eng Mode 7  
File: IA-FCP-126.xls  
Author: n/a



solar orbiter



### Procedure Flowchart Overview



SWA EAS2 run Eng Mode 7 File: IA-FCP-126.xls Author: n/a	 
--	--

Step	Label/Time	Activity/Remarks/Branch	CK	Display
<b>Beginning of Procedure</b>				
Beginning of Sequence				
<b>AIAF126A</b>		<b>SWA EAS2 RunEngMode7</b> SeqFlags [ Crit/Plan/Stdalone/Sched ] : NSYN Forced Subschedule : SWA (109) TimeTag type : B		
1		<b>Step 1</b>		
		Run EAS2 Engineering Mode 7		
	+00.00.00	Send SWA_TC_EAS2_ENG7_MODE ZIA58841 SWA_TC_EAS2_ENG7_MODE TC Control Flags: GBM IL DSE --Y NC ---		
End of Sequence				
<b>AIAF126A</b>				
<b>End of Procedure</b>				