

SWA PAS CEM HV procedure
File: IA-FCP-130_in.xls
Author: n/a



Procedure Summary

Objectives

SWA PAS CEM HV procedure

Summary of Constraints

n/a

Spacecraft Configuration

Start of Procedure

Type Pre-condition Here

End of Procedure

Type Post-condition Here

Reference File(s)

Input Command Sequences

Output Command Sequences

AIAF130A

Referenced Displays

ANDs GRDs SLDs

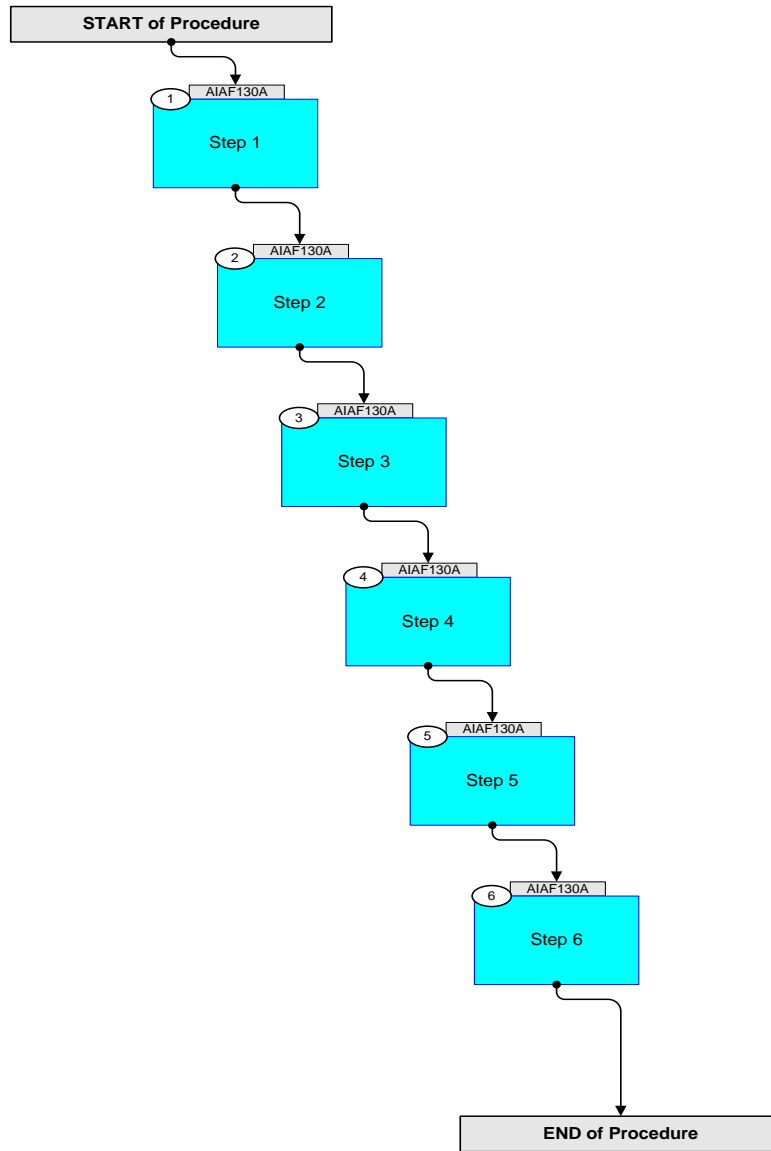
Configuration Control Information

DATE	FOP ISSUE	VERSION	MODIFICATION DESCRIPTION	AUTHOR	SPR REF
------	-----------	---------	--------------------------	--------	---------

SWA PAS CEM HV procedure
File: IA-FCP-130_in.xls
Author: n/a



Procedure Flowchart Overview



SWA PAS CEM HV procedure File: IA-FCP-130_in.xls Author: n/a	 
--	--

Step	Label/Time	Activity/Remarks/Branch	CK	Display
Beginning of Procedure				
Beginning of Sequence				
	AIAF130A	SWA PAS CEM HV proc SeqFlags [Crit/Plan/Stdalone/Sched] : NSYN Forced Subschedule : SWA (109) TimeTag type : B <u>Formal Parameter List</u> {FP} XF130A01 DefVal = 570 (HV_VAL) <hex> {FP} XF130A02 DefVal = 5 (PAR_DESC) <hex> {FP} XF130A03 DefVal = 70 (PAR_DESC) <hex> {FP} XF130A04 DefVal = OFF (HEATHER_STATUS) {FP} XF130A05 DefVal = 0 (DUTY_CYCLE) <hex>		
1		Step 1 <i>Next step(s):</i> -> 2		
		Stop PAS science		
	+00.00.00	Send SWA_TC_PAS_STOP_SCIENCE ZIA58944 SWA_TC_PAS_STOP_SCIENCE TC Control Flags: GBM IL DSE --Y NC ---		
2		Step 2 <i>Next step(s):</i> -> 3		
		Set PAS CEM HV		
	+00.00.08	Send SWA_TC_PAS_SET_HV_CEM ZIA58868 SWA_TC_PAS_SET_HV_CEM TC Control Flags: GBM IL DSE --Y NC --- Command Parameters : PIA60344 HV_VAL = XF130A01		
3		Step 3 <i>Next step(s):</i> -> 4		

SWA PAS CEM HV procedure File: IA-FCP-130_in.xls Author: n/a	 
--	--

Step	Label/Time	Activity/Remarks/Branch	CK	Display
		Report 0x3004 register (Nominal CEM value)		
	+00.00.10	Send SWA_TC_DPU_REPORT_CONF_PARS ZIA58707 SWA_TC_DPU_REPORT_CONF_PARS TC Control Flags: GBM IL DSE --Y NC --- Command Parameters : PIA60137 NUM_OF_PARAMS = 0001 <dec> (Def) PIA60138 PAR_ID = 3004 <hex>		
4		Step 4 Next step(s): -> 5		
		Update the Nominal CEM value		
	+00.00.01	Send SWA_TC_DPU_MODIFY_CONF_PARS ZIA58706 SWA_TC_DPU_MODIFY_CONF_PARS TC Control Flags: GBM IL DSE --Y NC --- Command Parameters : PIA60133 NUM_OF_PARAMS = 0001 <dec> (Def) PIA60136 PAR_ID = 3004 <hex> PIA60135 PAR_DESC_SIZE = 0004 <dec> PIA60134 PAR_DESC = XF130A02 PIA60134 PAR_DESC = XF130A03 PIA60134 PAR_DESC = 0 <hex> PIA60134 PAR_DESC = 29 <hex>		
		Accept update		
	+00.00.01	Send SWA_TC_DPU_ACCEPT_CONF_PARS ZIA58708 SWA_TC_DPU_ACCEPT_CONF_PARS TC Control Flags: GBM IL DSE --Y NC ---		
		Report 0x3004 register (Nominal CEM value)		

SWA PAS CEM HV procedure File: IA-FCP-130_in.xls Author: n/a	 
--	--

Step	Label/Time	Activity/Remarks/Branch	CK	Display
	+00.00.01	Send SWA_TC_DPU_REPORT_CONF_PARS ZIA58707 SWA_TC_DPU_REPORT_CONF_PARS TC Control Flags: GBM IL DSE --Y NC --- Command Parameters : PIA60137 NUM_OF_PARAMS = 0001 <dec> (Def) PIA60138 PAR_ID = 3004 <hex>		
5		Step 5 Next step(s): -> 6		
		Control the heater		
	+00.00.01	Send SWA_TC_PAS_SET_OPEN_LOOP ZIA58947 SWA_TC_PAS_SET_OPEN_LOOP TC Control Flags: GBM IL DSE --Y NC --- Command Parameters : PIA60848 HEATHER_STATUS = XF130A04 PIA60849 DUTY_CYCLE = XF130A05		
6		Step 6 Next step(s): -> END		
		Start PAS science		
	+00.00.01	Send SWA_TC_PAS_START_SCIENCE ZIA58943 SWA_TC_PAS_START_SCIENCE TC Control Flags: GBM IL DSE --Y NC --- Command Parameters : PIA60777 CYC_ID = 22 <dec>		
AIAF130A		End of Sequence		
End of Procedure				