

SWA EAS2 Engineering Mode 2
File: IA-FCP-142.xls
Author: n/a



Procedure Summary

Objectives

EAS2 Eng Mode 2

Summary of Constraints

n/a

Spacecraft Configuration

Start of Procedure

Type Pre-condition Here

End of Procedure

Type Post-condition Here

Reference File(s)

Input Command Sequences

Output Command Sequences

AIAF142A

Referenced Displays

ANDs GRDs SLDs

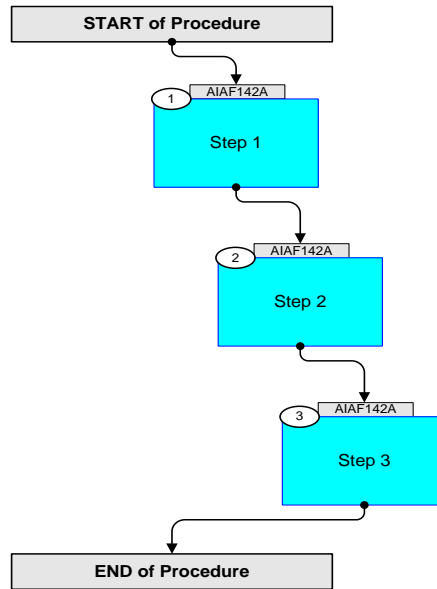
Configuration Control Information

DATE	FOP ISSUE	VERSION	MODIFICATION DESCRIPTION	AUTHOR	SPR REF
------	-----------	---------	--------------------------	--------	---------

SWA EAS2 Engineering Mode 2
File: IA-FCP-142.xls
Author: n/a



Procedure Flowchart Overview



SWA EAS2 Engineering Mode 2 File: IA-FCP-142.xls Author: n/a	 
--------------------------------------------------------------------	------------------------------------------------------------------------------------------------------------------------------------------------------------------------

Step	Label/Time	Activity/Remarks/Branch	CK	Display
Beginning of Procedure				
Beginning of Sequence				
AIAF142A		SWA EAS2 EngMode2 SeqFlags [Crit/Plan/Stdalone/Sched] : NSYN Forced Subschedule : SWA (109) TimeTag type : B <u>Formal Parameter List</u> {FP} XF142A01 DefVal = 300 (ACQ_TIME) <dec>		
1		Step 1 <i>Next step(s):</i> -> 2		
		Halt science on EAS2		
	+00.00.00	Send SWA_TC_EAS2_MAIL_WR ZIA58819 SWA_TC_EAS2_MAIL_WR TC Control Flags: GBM IL DSE --Y NC --- Command Parameters : PIA60031 MAILBOX_ID = MBOX1 (Def) PIA60446 MBV0 = 0 <hex> PIA60447 MBV1 = 0 <hex> PIA60448 MBV2 = 0 <hex>		
2		Step 2 <i>Next step(s):</i> -> 3		
		Run EM2 on EAS2		
	+00.00.02	Send SWA_TC_EAS2_ENG2_MODE ZIA58836 SWA_TC_EAS2_ENG2_MODE TC Control Flags: GBM IL DSE --Y NC --- Command Parameters : PIA60165 ACQ_TIME = XF142A01		
3		Step 3 <i>Next step(s):</i> -> END		

SWA EAS2 Engineering Mode 2 File: IA-FCP-142.xls Author: n/a	 
--------------------------------------------------------------------	------------------------------------------------------------------------------------------------------------------------------------------------------------------------

Step	Label/Time	Activity/Remarks/Branch	CK	Display
		Start science on EAS2		
	+00.05.00	Send SWA_TC_EAS2_MAIL_WR ZIA58819 SWA_TC_EAS2_MAIL_WR TC Control Flags: GBM IL DSE --Y NC --- Command Parameters : PIA60031 MAILBOX_ID = MBOX1 (Def) PIA60446 MBV0 = 0 <hex> PIA60447 MBV1 = 0 <hex> PIA60448 MBV2 = 2 <hex>		
AIAF142A		End of Sequence		
End of Procedure				