

SWA Enable/Disable Real Time Routing File: IA-FCP-830.xls Author: daniel lakey	 
--	--

Procedure Summary

Objectives

Convenience procedures to enable/disable additional OBC-directed packets
 TM(3,25)
 TM(6,x)
 TM(200,x)

Summary of Constraints

TM Downlink must have sufficient margin to accommodate the extra 50bps

Spacecraft Configuration

Start of Procedure

End of Procedure

Reference File(s)

Input Command Sequences

ADMF120B
 ADMF121B
 ADMF120C
 ADMF121C

Output Command Sequences

AIAF830A
 AIAF830B
 AIAF830C
 AIAF830D
 AIAF830E
 AIAF830F

Referenced Displays

ANDs GRDs SLDs

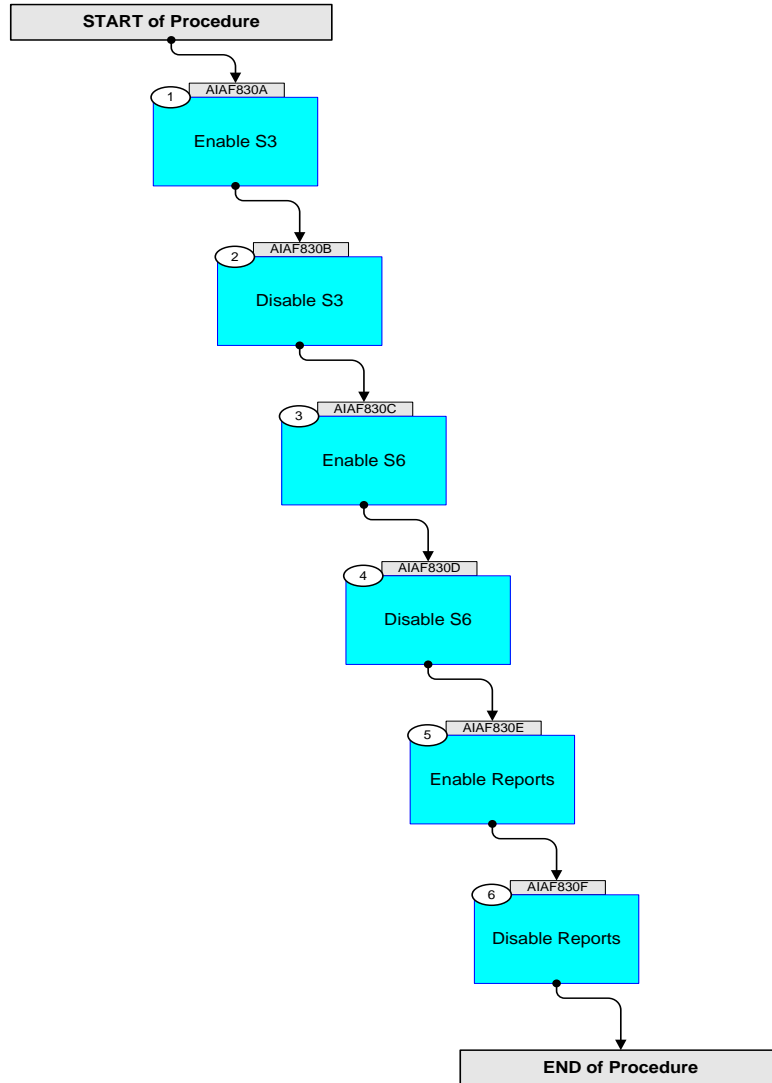
Configuration Control Information

DATE	FOP ISSUE	VERSION	MODIFICATION DESCRIPTION	AUTHOR	SPR REF
01/08/2019		1	Initial check-in	dlakey	M7
16/08/2019		2			M7
20/01/2020		3			M7

SWA Enable/Disable Real Time Routing
File: IA-FCP-830.xls
Author: daniel lakey



Procedure Flowchart Overview



SWA Enable/Disable Real Time Routing
 File: IA-FCP-830.xls
 Author: daniel lakey




Step	Label/Time	Activity/Remarks/Branch	CK	Display
Beginning of Procedure				
Beginning of Sequence				
	AIAF830A	SWA Enab OBC S3 RT SeqFlags [Crit/Plan/Stdalone/Sched] : NNYN Forced Subschedule : SWA (109) TimeTag type : B		
1		Enable S3 Next step(s): -> 2		
	ET=+00.00.01 UT=+00.00.01	Execute Sequence ADMF120C Fwd. by PID,Typ,Styp v03 Sequence Grouping = - Sequence Parameter(s): XF120C01 Process ID = SWA_3 XF120C02 PUS type = 3 <dec> XF120C03 PUS subtype = 25 <dec> Subsch ID : SWA (109)		
	ET=+00.00.01 UT=+00.00.01	Execute Sequence ADMF120C Fwd. by PID,Typ,Styp v03 Sequence Grouping = - Sequence Parameter(s): XF120C01 Process ID = SWA_4 XF120C02 PUS type = 3 <dec> XF120C03 PUS subtype = 25 <dec> Subsch ID : SWA (109)		
	ET=+00.00.01 UT=+00.00.01	Execute Sequence ADMF120C Fwd. by PID,Typ,Styp v03 Sequence Grouping = - Sequence Parameter(s): XF120C01 Process ID = SWA_1 XF120C02 PUS type = 3 <dec> XF120C03 PUS subtype = 25 <dec> Subsch ID : SWA (109)		
AIAF830A End of Sequence				
Beginning of Sequence				
	AIAF830B	SWA Disab OBC S3 RT SeqFlags [Crit/Plan/Stdalone/Sched] : NNYN Forced Subschedule : SWA (109) TimeTag type : B		

SWA Enable/Disable Real Time Routing
 File: IA-FCP-830.xls
 Author: daniel lakey




Step	Label/Time	Activity/Remarks/Branch	CK	Display
2		<p>Disable S3</p> <p><i>Next step(s):</i> -> 3</p>		
	ET=+00.00.00 UT=+00.00.00	<p>Execute Sequence ADMF121C Dis. by PID,Typ,Styp v03 Sequence Grouping = - Sequence Parameter(s): XF121C01 Process ID = SWA_3 XF121C02 PUS type = 3 <dec> XF121C03 PUS subtype = 25 <dec></p> <p>Subsch ID : SWA (109)</p>		
	ET=+00.00.01 UT=+00.00.01	<p>Execute Sequence ADMF121C Dis. by PID,Typ,Styp v03 Sequence Grouping = - Sequence Parameter(s): XF121C01 Process ID = SWA_4 XF121C02 PUS type = 3 <dec> XF121C03 PUS subtype = 25 <dec></p> <p>Subsch ID : SWA (109)</p>		
	ET=+00.00.01 UT=+00.00.01	<p>Execute Sequence ADMF121C Dis. by PID,Typ,Styp v03 Sequence Grouping = - Sequence Parameter(s): XF121C01 Process ID = SWA_1 XF121C02 PUS type = 3 <dec> XF121C03 PUS subtype = 25 <dec></p> <p>Subsch ID : SWA (109)</p>		
		End of Sequence		
		Beginning of Sequence		
	AIAF830C	<p>SWA Enab OBC S6 RT SeqFlags [Crit/Plan/Stdalone/Sched] : NNYN Forced Subschedule : SWA (109) TimeTag type : B</p>		
3		<p>Enable S6</p> <p><i>Next step(s):</i> -> 4</p>		

SWA Enable/Disable Real Time Routing
 File: IA-FCP-830.xls
 Author: daniel lakey




Step	Label/Time	Activity/Remarks/Branch	CK	Display
	ET=+00.00.01 UT=+00.00.01	Execute Sequence ADMF120B Fwd. TM by PID&Type v03 Sequence Grouping = - Sequence Parameter(s): XF120B01 Process ID = SWA_4 XF120B02 PUS type = 6 <dec> Subsch ID : SWA (109)		
AIAF830C		End of Sequence		
		Beginning of Sequence		
	AIAF830D	SWA Disab OBC S6 RT SeqFlags [Crit/Plan/Stdalone/Sched] : NNYN Forced Subschedule : SWA (109) TimeTag type : B		
4		Disable S6 Next step(s): -> 5		
	ET=+00.00.00 UT=+00.00.00	Execute Sequence ADMF121B Dis. TM by PID&Type v03 Sequence Grouping = - Sequence Parameter(s): XF121B01 Process ID = SWA_4 XF121B02 PUS type = 6 <dec> Subsch ID : SWA (109)		
AIAF830D		End of Sequence		
		Beginning of Sequence		
	AIAF830E	SWA Enab OBC Rpt RT SeqFlags [Crit/Plan/Stdalone/Sched] : NNYN Forced Subschedule : SWA (109) TimeTag type : B		
5		Enable Reports Next step(s): -> 6		

SWA Enable/Disable Real Time Routing
 File: IA-FCP-830.xls
 Author: daniel lakey




Step	Label/Time	Activity/Remarks/Branch	CK	Display
	ET=+00.00.01 UT=+00.00.01	Execute Sequence ADMF120B Fwd. TM by PID&Type v03 Sequence Grouping = - Sequence Parameter(s): XF120B01 Process ID = SWA_4 XF120B02 PUS type = 200 <dec> Subsch ID : SWA (109)		
	ET=+00.00.01 UT=+00.00.01	Execute Sequence ADMF120B Fwd. TM by PID&Type v03 Sequence Grouping = - Sequence Parameter(s): XF120B01 Process ID = SWA_4 XF120B02 PUS type = 201 <dec> Subsch ID : SWA (109)		
	ET=+00.00.01 UT=+00.00.01	Execute Sequence ADMF120B Fwd. TM by PID&Type v03 Sequence Grouping = - Sequence Parameter(s): XF120B01 Process ID = SWA_4 XF120B02 PUS type = 202 <dec> Subsch ID : SWA (109)		
	ET=+00.00.01 UT=+00.00.01	Execute Sequence ADMF120B Fwd. TM by PID&Type v03 Sequence Grouping = - Sequence Parameter(s): XF120B01 Process ID = SWA_4 XF120B02 PUS type = 203 <dec> Subsch ID : SWA (109)		
		End of Sequence		
		Beginning of Sequence		
	AIAF830E	SWA Disab OBC Rpt RT SeqFlags [Crit/Plan/Stdalone/Sched] : NNYN Forced Subschedule : SWA (109) TimeTag type : B		
6		Disable Reports Next step(s): -> END		

SWA Enable/Disable Real Time Routing
 File: IA-FCP-830.xls
 Author: daniel lakey




Step	Label/Time	Activity/Remarks/Branch	CK	Display
	ET=+00.00.00 UT=+00.00.00	Execute Sequence ADMF121B Dis. TM by PID&Type v03 Sequence Grouping = - Sequence Parameter(s): XF121B01 Process ID = SWA_4 XF121B02 PUS type = 200 <dec> Subsch ID : SWA (109)		
	ET=+00.00.01 UT=+00.00.01	Execute Sequence ADMF121B Dis. TM by PID&Type v03 Sequence Grouping = - Sequence Parameter(s): XF121B01 Process ID = SWA_4 XF121B02 PUS type = 201 <dec> Subsch ID : SWA (109)		
	ET=+00.00.00 UT=+00.00.00	Execute Sequence ADMF121B Dis. TM by PID&Type v03 Sequence Grouping = - Sequence Parameter(s): XF121B01 Process ID = SWA_4 XF121B02 PUS type = 202 <dec> Subsch ID : SWA (109)		
	ET=+00.00.00 UT=+00.00.00	Execute Sequence ADMF121B Dis. TM by PID&Type v03 Sequence Grouping = - Sequence Parameter(s): XF121B01 Process ID = SWA_4 XF121B02 PUS type = 203 <dec> Subsch ID : SWA (109)		
AIAF830F		End of Sequence		
End of Procedure				