

SWA SVT-1 PAS File: IA-SVT-154.xls Author: jpellon	 
----------------------------------------------------------	------------------------------------------------------------------------------------------------------------------------------------------------------------------------

**Procedure Summary**

**Objectives**

SWA PAS SVT-1

**Summary of Constraints**

**Spacecraft Configuration**

**Start of Procedure**

SWA DPU On, PAS Off

**End of Procedure**

SWA DPU On, PAS Off

**Reference File(s)**

**Input Command Sequences**

**Output Command Sequences**

AI1AV154A

**Referenced Displays**

ANDs      GRDs      SLDs

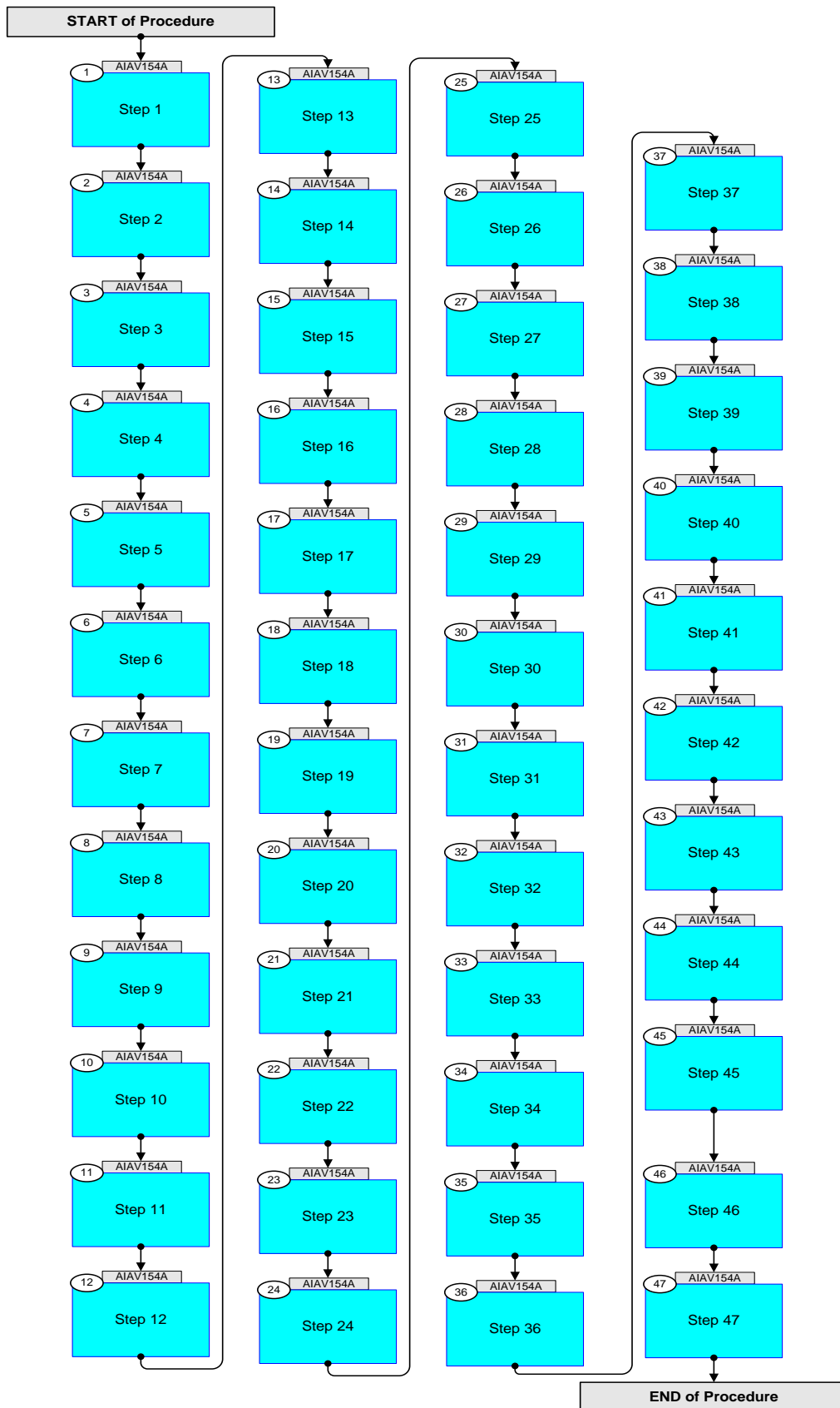
**Configuration Control Information**

DATE	FOP ISSUE	VERSION	MODIFICATION DESCRIPTION	AUTHOR	SPR REF
14/01/2019		1	First exported version	dlakey	M7
14/02/2019		2	Updated to V2	dlakey	M7
22/03/2019		3	Update value of command parameter PIA60786 from FDF0 to FDF in step 39 of the procedure Update value of command parameter PIA60787 from FBF0 to FBF in step 39 of the procedure	jpellon	M7

SWA SVT-1 PAS  
File: IA-SVT-154.xls  
Author: jpellon



### Procedure Flowchart Overview



SWA SVT-1 PAS File: IA-SVT-154.xls Author: jpellon		<b>solar orbiter</b>	
----------------------------------------------------------	------------------------------------------------------------------------------------	----------------------	-------------------------------------------------------------------------------------

**Procedure Flowchart Overview**

SWA SVT-1 PAS  
File: IA-SVT-154.xls  
Author: jpellon



solar orbiter



Step	Label/Time	Activity/Remarks/Branch	CK	Display
<b>Beginning of Procedure</b>				
Beginning of Sequence				
	AIAV154A	AIAV154A TimeTag type : B		
1		<b>Step 1</b>  <i>Next step(s):</i> -> 2		
		Commands for PAS part of the SVT-1 test		
2		<b>Step 2</b>  <i>Next step(s):</i> -> 3		
		Power on PAS without using macros		
	+00.00.00	Send SWA_TC_PAS_ON ZIA58854 SWA_TC_PAS_ON TC Control Flags: GBM IL DSE --Y NC ---		
3		<b>Step 3</b>  <i>Next step(s):</i> -> 4		
		Start PAS HK		
	+00.01.00	Send SWA_TC_HK_EN ZIA58050 SWA_TC_HK_EN TC Control Flags: GBM IL DSE --Y NC ---  Command Parameters : PIA58050 TMSID = PAS_SENS_HK		
4		<b>Step 4</b>  <i>Next step(s):</i> -> 5		

SWA SVT-1 PAS File: IA-SVT-154.xls Author: jpellon	 
----------------------------------------------------------	------------------------------------------------------------------------------------------------------------------------------------------------------------------------

Step	Label/Time	Activity/Remarks/Branch	CK	Display
		Request PAS HK		
	+00.00.15	Send SWA_TC_PAS_HK_DATA_REQUEST ZIA58866 SWA_TC_PAS_HK_DATA_REQUEST TC Control Flags: GBM IL DSE --Y NC ---		
5		Step 5  Next step(s): -> 6		
		Clear Sequencer Shared RAM		
	+00.00.15	Send SWA_TC_PAS_CLEAR_SEQ ZIA58861 SWA_TC_PAS_CLEAR_SEQ TC Control Flags: GBM IL DSE --Y NC ---		
6		Step 6  Next step(s): -> 7		
		Dump PAS parameter (shared memory)		
	+00.00.15	Send SWA_TC_PAS_DUMP_PARAMETER ZIA58942 SWA_TC_PAS_DUMP_PARAMETER TC Control Flags: GBM IL DSE --Y NC ---  Command Parameters : PIA60776 PAS_PARAM_ID = CmdReadSharedRam		
		Check for reception of YIA58906 - TM(203,200) SWA_TM_PAS_PARAM_REPORT		
7		Step 7  Next step(s): -> 8		

SWA SVT-1 PAS  
File: IA-SVT-154.xls  
Author: jpellon



solar orbiter



Step	Label/Time	Activity/Remarks/Branch	CK	Display
		Upload PAS Sequence table		
	+00.00.05	Send SWA_TC_PAS_UPLOAD_SEQ_TABLE ZIA58870 SWA_TC_PAS_UPLOAD_SEQ_TABLE TC Control Flags: GBM IL DSE --Y NC ---		
8		Step 8  Next step(s): -> 9		
		Start PAS Sequence		
	+00.00.05	Send SWA_TC_PAS_START_SEQUENCE ZIA58871 SWA_TC_PAS_START_SEQUENCE TC Control Flags: GBM IL DSE --Y NC ---		
9		Step 9  Next step(s): -> 10		
		Dump PAS parameter (get sequencer version)		
	+00.00.05	Send SWA_TC_PAS_DUMP_PARAMETER ZIA58942 SWA_TC_PAS_DUMP_PARAMETER TC Control Flags: GBM IL DSE --Y NC --- Command Parameters : PIA60776 PAS_PARAM_ID = SequencerVer		
		Check for reception of YIA58906 - TM(203,200) SWA_TM_PAS_PARAM_REPORT		
10		Step 10  Next step(s): -> 11		

SWA SVT-1 PAS File: IA-SVT-154.xls Author: jpellon	 
----------------------------------------------------------	------------------------------------------------------------------------------------------------------------------------------------------------------------------------

Step	Label/Time	Activity/Remarks/Branch	CK	Display
		Dump PAS parameter (get sequencer state)		
	+00.00.05	Send SWA_TC_PAS_DUMP_PARAMETER ZIA58942 SWA_TC_PAS_DUMP_PARAMETER TC Control Flags: GBM IL DSE --Y NC --- Command Parameters : PIA60776 PAS_PARAM_ID = SequencerState		
		Check for reception of YIA58906 - TM(203,200) SWA_TM_PAS_PARAM_REPORT		
11		Step 11  Next step(s): -> 12		
		Upload PAS config table		
	+00.00.05	Send SWA_TC_PAS_LOAD_CONF_TABLE ZIA58874 SWA_TC_PAS_LOAD_CONF_TABLE TC Control Flags: GBM IL DSE --Y NC --- Command Parameters : PIA60800 DF_0 = 51351234 <hex> PIA60801 DF_1 = F3B65678 <hex> PIA60802 DF_2 = 131A9F05 <hex> PIA60803 DF_3 = ED2FBE76 <hex> PIA60804 DF_4 = 47AE4B7C <hex> PIA60805 DF_5 = 74F5C261 <hex> PIA60806 DF_6 = 7C8A24DD <hex> PIA60807 DF_7 = CCCC9D3F <hex> PIA60808 DF_8 = A978D4DC <hex>  PIA60809 DF_9 = 5E526E97 <hex> PIA60810 DF_10 = 3B6429BA <hex> PIA60811 DF_11 = AE353F8F <hex> PIA60812 DF_12 = 6A228F5C <hex> PIA60813 DF_13 = 53F704BC <hex> PIA60814 DF_14 = 9D916833 <hex> PIA60815 DF_15 = 726B1E0D <hex> PIA60816 DF_16 = A062F168 <hex> PIA60817 DF_17 = 937DEAF8 <hex> PIA60818 DF_18 = CF949328 <hex> PIA60819 DF_19 = B7A8928D <hex> PIA60820 DF_20 = 92FBB794 <hex> PIA60821 DF_21 = 1296EFCF <hex> PIA60822 DF_22 = 0 <hex> PIA60823 DF_23 = 16F9DB00 <hex>		

SWA SVT-1 PAS File: IA-SVT-154.xls Author: jpellon	 
----------------------------------------------------------	------------------------------------------------------------------------------------------------------------------------------------------------------------------------

Step	Label/Time	Activity/Remarks/Branch	CK	Display
		PIA60824 DF_24 = 5618C49B <hex> PIA60825 DF_25 = A3D7190E <hex> PIA60826 DF_26 = 1BBE761C <hex> PIA60827 DF_27 = 1415CAC0 <hex> PIA60828 DF_28 = 2F1A13AE <hex> PIA60829 DF_29 = 131A9F15 <hex> PIA60830 DF_30 = 8F0CD4FD <hex> PIA60831 DF_31 = 2D0E15C2 <hex> PIA60832 DF_32 = 1960410A <hex> PIA60833 DF_33 = 7807BE76 <hex> PIA60834 DF_34 = 74BC22E9 <hex> PIA60835 DF_35 = 0BA5E307 <hex> PIA60836 DF_36 = 801A8F5C <hex> PIA60837 DF_37 = E6C05A66 <hex> PIA60838 DF_38 = 3E66 <hex>  PIA60839 DF_39 = 009C28F5 <hex> PIA60840 DF_40 = 0000798A <hex> PIA60841 DF_41 = 0 <hex> PIA60842 DF_42 = 0 <hex> PIA60843 DF_43 = 0 <hex> PIA60844 DF_44 = 10000 <hex>		
12		Step 12  Next step(s): -> 13		
		Dump PAS parameter (get configuration table)		
	+00.00.10	Send SWA_TC_PAS_DUMP_PARAMETER ZIA58942 SWA_TC_PAS_DUMP_PARAMETER TC Control Flags: GBM IL DSE --Y NC ---  Command Parameters : PIA60776 PAS_PARAM_ID = ConfTable		
		Check for reception of YIA58906 - TM(203,200) SWA_TM_PAS_PARAM_REPORT		
13		Step 13  Next step(s): -> 14		
		Load PAS engineering table		



SWA SVT-1 PAS File: IA-SVT-154.xls Author: jpellon		
----------------------------------------------------------	------------------------------------------------------------------------------------	-------------------------------------------------------------------------------------

Step	Label/Time	Activity/Remarks/Branch	CK	Display
	+00.00.10	Send SWA_TC_PAS_LOAD_ENGIN_TABLE ZIA58875 SWA_TC_PAS_LOAD_ENGIN_TABLE TC Control Flags: GBM IL DSE --Y NC --- Command Parameters : PIA60709 ENG_HT_ANL_MAX = F00C44 <hex> PIA60711 ENK_K = 3CB44D <hex> PIA60708 ENG_ANL_TD_RATIO = 0F5D1D <hex> PIA60706 ENG_ANL_BD_RATIO = 0F441A <hex> PIA60707 ENG_ANL_TC_RATIO = 0F4F8D <hex> PIA60710 ENG_HT_STEP_D = 00001E <hex>		
14		Step 14  Next step(s): -> 15		
		Dump PAS parameter (get engineering table)		
	+00.00.10	Send SWA_TC_PAS_DUMP_PARAMETER ZIA58942 SWA_TC_PAS_DUMP_PARAMETER TC Control Flags: GBM IL DSE --Y NC --- Command Parameters : PIA60776 PAS_PARAM_ID = EngTable		
		Check for reception of YIA58906 - TM(203,200) SWA_TM_PAS_PARAM_REPORT		
15		Step 15  Next step(s): -> 16		
		Report the PAS snapshot table		
	+00.00.10	Send SWA_TC_DPU_REPORT_CONF_PARS ZIA58707 SWA_TC_DPU_REPORT_CONF_PARS TC Control Flags: GBM IL DSE --Y NC --- Command Parameters : PIA60137 NUM_OF_PARAMS = 1 <dec> PIA60138 PAR_ID = 3008 <hex>		

SWA SVT-1 PAS File: IA-SVT-154.xls Author: jpellon	 
----------------------------------------------------------	------------------------------------------------------------------------------------------------------------------------------------------------------------------------

Step	Label/Time	Activity/Remarks/Branch	CK	Display
		Check for reception of YIA58900 - TM(250,200) SWA_TM_PARAM_REPORT		
16		Step 16  Next step(s): -> 17		
		Power off PAS		
	+00.00.10	Send SWA_TC_PAS_OFF ZIA58855 SWA_TC_PAS_OFF TC Control Flags: GBM IL DSE --Y NC ---		
17		Step 17  Next step(s): -> 18		
		Power on PAS using macros		
	+00.00.20	Send SWA_TC_PAS_PWR_ON ZIA58858 SWA_TC_PAS_PWR_ON TC Control Flags: GBM IL DSE --Y NC ---		
18		Step 18  Next step(s): -> 19		
		Run PAS config macro		
	+00.01.00	Send SWA_TC_PAS_CONFIG ZIA58853 SWA_TC_PAS_CONFIG TC Control Flags: GBM IL DSE --Y NC ---		

SWA SVT-1 PAS File: IA-SVT-154.xls Author: jpellon	 
----------------------------------------------------------	------------------------------------------------------------------------------------------------------------------------------------------------------------------------

Step	Label/Time	Activity/Remarks/Branch	CK	Display
19		<p style="text-align: center;"><b>Step 19</b></p> <p><i>Next step(s):</i> -&gt; 20</p>		
		Write PAS master control register		
	+00.11.00	Send SWA_TC_PAS_WR_MASTER_CTRL_REG ZIA58863 SWA_TC_PAS_WR_MASTER_CTRL_REG TC Control Flags: GBM IL DSE --Y NC --- Command Parameters : PIA60343 REG_VAL = 1D <hex>		
20		<p style="text-align: center;"><b>Step 20</b></p> <p><i>Next step(s):</i> -&gt; 21</p>		
		Write PAS master control register		
	+00.00.05	Send SWA_TC_PAS_WR_MASTER_CTRL_REG ZIA58863 SWA_TC_PAS_WR_MASTER_CTRL_REG TC Control Flags: GBM IL DSE --Y NC --- Command Parameters : PIA60343 REG_VAL = 5 <hex>		
21		<p style="text-align: center;"><b>Step 21</b></p> <p><i>Next step(s):</i> -&gt; 22</p>		
		Run PAS macro HV ramp up		

SWA SVT-1 PAS File: IA-SVT-154.xls Author: jpellon	 
----------------------------------------------------------	------------------------------------------------------------------------------------------------------------------------------------------------------------------------

Step	Label/Time	Activity/Remarks/Branch	CK	Display
	+00.00.05	Send SWA_TC_PAS_HV_RAMP_UP ZIA58856 SWA_TC_PAS_HV_RAMP_UP TC Control Flags: GBM IL DSE --Y NC --- Command Parameters : PIA60791 INIT_VALUE = 0 <hex> PIA60790 NOMINAL_VAL = 6B7 <hex> PIA60792 STEP_VALUE = 11E <hex> PIA60793 HV_WAIT = 1E <hex>		
22		Step 22  Next step(s): -> 23		
		Upload PAS static table		
	+00.04.00	Send SWA_TC_PAS_LOAD_STATIC_TABLE ZIA58876 SWA_TC_PAS_LOAD_STATIC_TABLE TC Control Flags: GBM IL DSE --Y NC --- Command Parameters : PIA60700 CHANNELTRON_CONF = 0 <hex> PIA60713 FIRST_ENERGY = 8 <hex> PIA60705 ENERGY_NUMBER = 30 <hex> PIA60712 FIRST_ELEV = 1 <hex> PIA60704 ELEV_NUMB = 7 <hex> PIA60720 K_VALUE = 1 <hex> PIA60721 N_VALUE = 1 <hex>		
23		Step 23  Next step(s): -> 24		
		Upload PAS dynamic table		

SWA SVT-1 PAS File: IA-SVT-154.xls Author: jpellon		
----------------------------------------------------------	------------------------------------------------------------------------------------	-------------------------------------------------------------------------------------

Step	Label/Time	Activity/Remarks/Branch	CK	Display
	+00.00.10	Send SWA_TC_PAS_LOAD_DYNAMIC_TABLE ZIA58877 SWA_TC_PAS_LOAD_DYNAMIC_TABLE TC Control Flags: GBM IL DSE --Y NC --- Command Parameters : PIA60725 PKTR_CHANN_CONF = 2 <hex> PIA60731 PKTR_FIRST_ENERGY = 6 <hex> PIA60729 PKTR_ENERGY_NUMBER = 00005a <hex> PIA60730 PKTR_FIRST_ELEV = 0 <hex> PIA60727 PKTR_ELEV_NUMB = 9 <hex> PIA60728 PKTR_EN_W_SIZE = 20 <hex> PIA60726 PKTR_EL_W_SIZE = 3 <hex> PIA60732 PKTR_K_VALUE = 5 <hex> PIA60734 PKTR_N_VALUE = 20 <hex>  PIA60733 PKTR_L_VALUE = 4 <hex>		
24		Step 24  Next step(s): -> 25		
		Upload PAS pulse table		
	+00.00.10	Send SWA_TC_PAS_LOAD_PULSE_TABLE ZIA58878 SWA_TC_PAS_LOAD_PULSE_TABLE TC Control Flags: GBM IL DSE --Y NC --- Command Parameters : PIA60719 INJECT_PULSE_ENABLED = F1A6E <hex> PIA60433 ENERGY_BIN = 20 <hex> PIA60672 ELEV_BIN = 5 <hex> PIA60717 INJECT_PULSE_CH_NUM = 4 <hex> PIA60718 INJECT_PULSE_CNT = 10 <hex>		
25		Step 25  Next step(s): -> 26		
		Write PAS mailbox control (start static scheme)		

SWA SVT-1 PAS File: IA-SVT-154.xls Author: jpellon	 
----------------------------------------------------------	------------------------------------------------------------------------------------------------------------------------------------------------------------------------

Step	Label/Time	Activity/Remarks/Branch	CK	Display
	+00.00.10	Send SWA_TC_PAS_WR_MAILBOX_CTRL ZIA58873 SWA_TC_PAS_WR_MAILBOX_CTRL TC Control Flags: GBM IL DSE --Y NC --- Command Parameters : PIA60347 MBV_VAL = 1 <hex>		
26		Step 26  Next step(s): -> 27		
		Write PAS pre-amp power control (disable amplifiers)		
	+00.00.30	Send SWA_TC_PAS_WR_PREAMP_CTRL_REG ZIA58862 SWA_TC_PAS_WR_PREAMP_CTRL_REG TC Control Flags: GBM IL DSE --Y NC --- Command Parameters : PIA58062 PRE_AMP1 = OFF PIA58063 PRE_AMP2 = OFF		
27		Step 27  Next step(s): -> 28		
		Write PAS pre-amp power control (enable amplifiers)		
	+00.00.30	Send SWA_TC_PAS_WR_PREAMP_CTRL_REG ZIA58862 SWA_TC_PAS_WR_PREAMP_CTRL_REG TC Control Flags: GBM IL DSE --Y NC --- Command Parameters : PIA58062 PRE_AMP1 = ON (Def) PIA58063 PRE_AMP2 = ON (Def)		
28		Step 28  Next step(s): -> 29		

SWA SVT-1 PAS  
File: IA-SVT-154.xls  
Author: jpellon



solar orbiter



Step	Label/Time	Activity/Remarks/Branch	CK	Display
		Write PAS mailbox control (abort execution)		
	+00.00.30	<pre>Send SWA_TC_PAS_WR_MAILBOX_CTRL ZIA58873 SWA_TC_PAS_WR_MAILBOX_CTRL   TC Control Flags:     GBM IL DSE     --Y NC ---   Command Parameters : PIA60347 MBV_VAL = FF &lt;hex&gt;</pre>		
29		<p><b>Step 29</b></p> <p><b>Next step(s):</b> -&gt; 30</p>		
		Set main HV		
	+00.00.10	<pre>Send SWA_TC_PAS_SET_MAIN_HV ZIA58869 SWA_TC_PAS_SET_MAIN_HV   TC Control Flags:     GBM IL DSE     --Y NC ---   Command Parameters : PIA60344 HV_VAL = F00 &lt;hex&gt;</pre>		
30		<p><b>Step 30</b></p> <p><b>Next step(s):</b> -&gt; 31</p>		
		Set HV CEM		
	+00.00.30	<pre>Send SWA_TC_PAS_SET_HV_CEM ZIA58868 SWA_TC_PAS_SET_HV_CEM   TC Control Flags:     GBM IL DSE     --Y NC ---   Command Parameters : PIA60344 HV_VAL = 614 &lt;hex&gt;</pre>		
31		<p><b>Step 31</b></p> <p><b>Next step(s):</b> -&gt; 32</p>		

SWA SVT-1 PAS File: IA-SVT-154.xls Author: jpellon	 
----------------------------------------------------------	------------------------------------------------------------------------------------------------------------------------------------------------------------------------

Step	Label/Time	Activity/Remarks/Branch	CK	Display
		Set main HV		
	+00.01.00	Send SWA_TC_PAS_SET_MAIN_HV ZIA58869 SWA_TC_PAS_SET_MAIN_HV TC Control Flags: GBM IL DSE --Y NC --- Command Parameters : PIA60344 HV_VAL = FFF <hex>		
32		Step 32  Next step(s): -> 33		
		Set HV CEM		
	+00.00.20	Send SWA_TC_PAS_SET_HV_CEM ZIA58868 SWA_TC_PAS_SET_HV_CEM TC Control Flags: GBM IL DSE --Y NC --- Command Parameters : PIA60344 HV_VAL = 6B7 <hex>		
33		Step 33  Next step(s): -> 34		
		Enable RPW freezing		
	+00.00.30	Send SWA_TC_DPU_RPW_EN ZIA58718 SWA_TC_DPU_RPW_EN TC Control Flags: GBM IL DSE --Y NC --- Command Parameters : PIA60847 RPW_QAULITY_TH = 0 <hex> PIA60858 PasEnDis_RPW = ENABLE		
34		Step 34  Next step(s): -> 35		



SWA SVT-1 PAS File: IA-SVT-154.xls Author: jpellon	 
----------------------------------------------------------	------------------------------------------------------------------------------------------------------------------------------------------------------------------------

Step	Label/Time	Activity/Remarks/Branch	CK	Display
		PAS enter Engineering mode (dynamic scheme for 100s)		
	+00.00.10	Send SWA_TC_PAS_ENG ZIA58852 SWA_TC_PAS_ENG TC Control Flags: GBM IL DSE --Y NC --- Command Parameters : PIA60856 S = 1 <hex> PIA60857 TIME = 64 <hex>		
35		Step 35  Next step(s): -> 36		
		Set peak tracking mask to CEM #4		
	+00.04.00	Send SWA_TC_PAS_SET_PEAK_TRACK_MASK ZIA58867 SWA_TC_PAS_SET_PEAK_TRACK_MASK TC Control Flags: GBM IL DSE --Y NC --- Command Parameters : PIA60214 MASK = 10 <hex>		
36		Step 36  Next step(s): -> 37		
		Upload PAS pulse table		
	+00.00.10	Send SWA_TC_PAS_LOAD_PULSE_TABLE ZIA58878 SWA_TC_PAS_LOAD_PULSE_TABLE TC Control Flags: GBM IL DSE --Y NC --- Command Parameters : PIA60719 INJECT_PULSE_ENABLED = F1A6E <hex> PIA60433 ENERGY_BIN = 25 <hex> PIA60672 ELEV_BIN = 4 <hex> PIA60717 INJECT_PULSE_CH_NUM = 4 <hex> PIA60718 INJECT_PULSE_CNT = 10 <hex>		

SWA SVT-1 PAS File: IA-SVT-154.xls Author: jpellon	 
----------------------------------------------------------	------------------------------------------------------------------------------------------------------------------------------------------------------------------------

Step	Label/Time	Activity/Remarks/Branch	CK	Display
37		<p style="text-align: center;"><b>Step 37</b></p> <p><i>Next step(s):</i> -&gt; 38</p>		
		PAS enter Engineering mode (dynamic scheme for 100s)		
	+00.00.10	<p>Send SWA_TC_PAS_ENG                      ZIA58852 SWA_TC_PAS_ENG                      TC Control Flags:                      GBM IL DSE                      --Y NC ---                      Command Parameters :                      PIA60856 S = 1 &lt;hex&gt;                      PIA60857 TIME = 64 &lt;hex&gt;</p>		
38		<p style="text-align: center;"><b>Step 38</b></p> <p><i>Next step(s):</i> -&gt; 39</p>		
		Set peak tracking mask to CEM #4		
	+00.04.00	<p>Send SWA_TC_PAS_SET_PEAK_TRACK_MASK                      ZIA58867 SWA_TC_PAS_SET_PEAK_TRACK_MASK                      TC Control Flags:                      GBM IL DSE                      --Y NC ---                      Command Parameters :                      PIA60214 MASK = 0 &lt;hex&gt;</p>		
39		<p style="text-align: center;"><b>Step 39</b></p> <p><i>Next step(s):</i> -&gt; 40</p>		
		PAS enter Calibration mode		

SWA SVT-1 PAS  
File: IA-SVT-154.xls  
Author: jpellon



solar orbiter



Step	Label/Time	Activity/Remarks/Branch	CK	Display
	+00.00.10	<p>Send SWA_TC_PAS_CALIBRATION_MODE</p> <p>ZIA58850 SWA_TC_PAS_CALIBRATION_MODE</p> <p>TC Control Flags: GBM IL DSE --Y NC ---</p> <p>Command Parameters :</p> <p>PIA60780 START_CEM = 5C2 &lt;hex&gt;</p> <p>PIA60781 STEP_CEM = 66 &lt;hex&gt;</p> <p>PIA60782 FINAL_CEM = 75B &lt;hex&gt;</p> <p>PIA60783 MASK_0 = FFB &lt;hex&gt;</p> <p>PIA60784 MASK_1 = FF7 &lt;hex&gt;</p> <p>PIA60785 MASK_2 = FEF &lt;hex&gt;</p> <p>PIA60786 MASK_3 = FDF &lt;hex&gt;</p> <p>PIA60787 MASK_4 = FBF &lt;hex&gt;</p> <p>PIA60788 POST_CEM = 6B7 &lt;hex&gt;</p> <p>PIA60789 POST_MASK = 0 &lt;hex&gt;</p>		
40		<p>Step 40</p> <p>Next step(s): -&gt; 41</p>		
		PAS halt science		
	+00.03.00	<p>Send SWA_TC_PAS_STOP_SCIENCE</p> <p>ZIA58944 SWA_TC_PAS_STOP_SCIENCE</p> <p>TC Control Flags: GBM IL DSE --Y NC ---</p>		
41		<p>Step 41</p> <p>Next step(s): -&gt; 42</p>		
		Load PAS engineering table		

SWA SVT-1 PAS File: IA-SVT-154.xls Author: jpellon	 
----------------------------------------------------------	------------------------------------------------------------------------------------------------------------------------------------------------------------------------

Step	Label/Time	Activity/Remarks/Branch	CK	Display
	+00.01.00	Send SWA_TC_PAS_LOAD_ENGIN_TABLE ZIA58875 SWA_TC_PAS_LOAD_ENGIN_TABLE TC Control Flags: GBM IL DSE --Y NC --- Command Parameters : PIA60709 ENG_HT_ANL_MAX = F00C44 <hex> PIA60711 ENK_K = 3CB44D <hex> PIA60708 ENG_ANL_TD_RATIO = 0F5D1D <hex> PIA60706 ENG_ANL_BD_RATIO = 0F441A <hex> PIA60707 ENG_ANL_TC_RATIO = 0F4F8D <hex> PIA60710 ENG_HT_STEP_D = 00001E <hex>		
42		Step 42  Next step(s): -> 43		
		Write PAS mailbox control (execute Engineering scheme)		
	+00.00.10	Send SWA_TC_PAS_WR_MAILBOX_CTRL ZIA58873 SWA_TC_PAS_WR_MAILBOX_CTRL TC Control Flags: GBM IL DSE --Y NC --- Command Parameters : PIA60347 MBV_VAL = 3 <hex>		
43		Step 43  Next step(s): -> 44		
		Write PAS mailbox control (stop executing)		
	+00.10.00	Send SWA_TC_PAS_WR_MAILBOX_CTRL ZIA58873 SWA_TC_PAS_WR_MAILBOX_CTRL TC Control Flags: GBM IL DSE --Y NC --- Command Parameters : PIA60347 MBV_VAL = FF <hex>		

SWA SVT-1 PAS  
File: IA-SVT-154.xls  
Author: jpellon



solar orbiter



Step	Label/Time	Activity/Remarks/Branch	CK	Display
44		<p><b>Step 44</b></p> <p><i>Next step(s):</i> -&gt; 45</p>		
		Start PAS cyclogram science		
	+00.00.10	<p>Send SWA_TC_PAS_START_SCIENCE ZIA58943 SWA_TC_PAS_START_SCIENCE</p> <p>TC Control Flags: GBM IL DSE --Y NC ---</p> <p>Command Parameters : PIA60777 CYC_ID = PasNc1</p>		
45		<p><b>Step 45</b></p> <p><i>Next step(s):</i> -&gt; 46</p>		
		Stop PAS science		
	+00.00.30	<p>Send SWA_TC_PAS_STOP_SCIENCE ZIA58944 SWA_TC_PAS_STOP_SCIENCE</p> <p>TC Control Flags: GBM IL DSE --Y NC ---</p>		
46		<p><b>Step 46</b></p> <p><i>Next step(s):</i> -&gt; 47</p>		
		Run PAS macro HV ramp down		
	+00.00.10	<p>Send SWA_TC_PAS_HV_RAMP_DOWN ZIA58857 SWA_TC_PAS_HV_RAMP_DOWN</p> <p>TC Control Flags: GBM IL DSE --Y NC ---</p> <p>Command Parameters : PIA60790 NOMINAL_VAL = 0 &lt;hex&gt; PIA60791 INIT_VALUE = 6B7 &lt;hex&gt; PIA60792 STEP_VALUE = 11E &lt;hex&gt; PIA60793 HV_WAIT = 1E &lt;hex&gt;</p>		

SWA SVT-1 PAS File: IA-SVT-154.xls Author: jpellon	 
----------------------------------------------------------	------------------------------------------------------------------------------------------------------------------------------------------------------------------------

Step	Label/Time	Activity/Remarks/Branch	CK	Display
47		<p style="text-align: center;"><b>Step 47</b></p> <p><i>Next step(s):</i> -&gt; END</p>		
		PAS fast power off		
	+00.04.00	Send SWA_TC_PAS_FAST_PWR_OFF ZIA58946 SWA_TC_PAS_FAST_PWR_OFF TC Control Flags: GBM IL DSE --Y NC ---		
<b>AIAV154A</b>		End of Sequence		
<b>End of Procedure</b>				